



HAMMER MILL (SYSTEM SOLUTIONS)

## OPTIMIZED OPERATIONS DELIVER OUTSTANDING PERFORMANCE

Our hammer mills can be arranged as individual units, but for large-scale wood-processing requirements they can be delivered as a system solution; configured in groups to deliver outstanding performance.

Multiple mills can work seamlessly together in a synchronized operation with a controlled feed rate that automatically adjusts to changing conditions, and therefore optimizes through-put.



## DECADES OF DEVELOPMENT

Our entire hammer mill range is based on decades of development and customer-driven enhancements, making our hammer mill technology extremely effective for the wood-processing industry. When coupled with the ability to fully-synchronize multiple mills into a single system, this can deliver distinct commercial advantages.

Our multi-unit systems comprises both dry and green wood grinding machines, which each generate valuable wood products for the particle board industry and other wood composite markets, pellet production, briquetting, and boiler fuels.

### FACTS

#### PRODUCT AREA:

- Grinding & Milling

#### SCAN THE QR-CODE:

And view the Page online,  
where you will have access  
to more information





To ensure minimal environmental impact and to meet local dust-emission standards, our hammer mills can operate with only recycling airflow or an optional external fan system for increased production.

All systems are Atex-classified and meet the highest international safety standards.

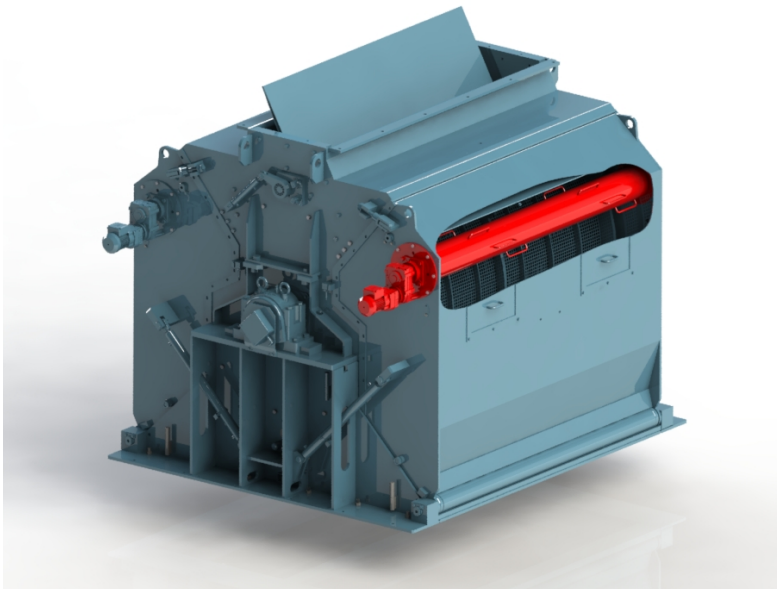


Image: The machine housing has an integrated cleaning device

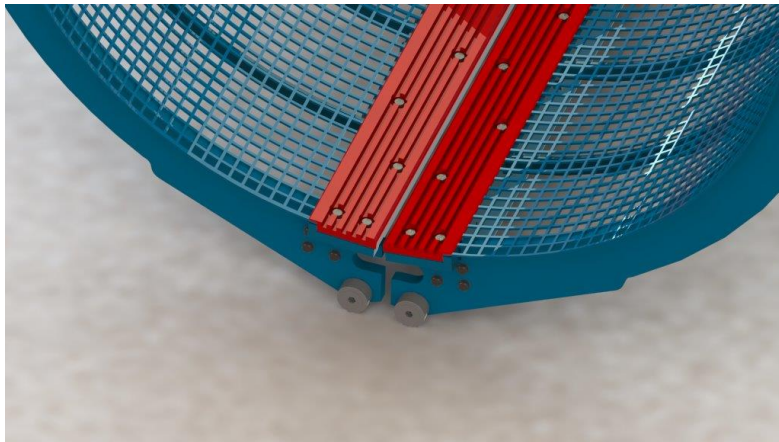


Image: The screen is clamped with milling segments



Image: Operating unit for safety and maintenance functions

## TECHNICAL DATA

Type	Rotor Diameter [mm]	Infeed Opening [mm]	Number of Hammers [pcs.]	Screening Surface [m <sup>2</sup> ]	Capacity [t/h]*	Motor Power [kW]	Weight [kg]**
HH 300x850	700	300 x 850	144	1,2	2 - 4	75 - 110	1400
HH 300x1.200	700	300 x 1.200	216	1,6	3 - 6	110 - 160	1600
HH 400x1.500	1000	400 x 1.500	216	2,9	5 - 10	160 - 250	5500
HH 500x1.800	1300	500 x 1.800	316	4,6	8 - 18	250 - 400	9500
HH 600x2.000	1600	600 x 2.000	480	7,6	15 - 25	400 - 630	15000

\*depending on kind and dimensions of material, moisture content and screen size

\*\*only hammermill without a motor/cleaning/feeding device

---

RELATED PRODUCTS WITHIN THE SAME PRODUCT AREA:

- [Butt flare reducer](#)
- [Grinders](#)
- [Hammer mill \(system solutions\)](#)
- [Hammer mill \(dry materials\)](#)
- [Hammer mill \(green materials\)](#)
- [Knife ring flaker](#)