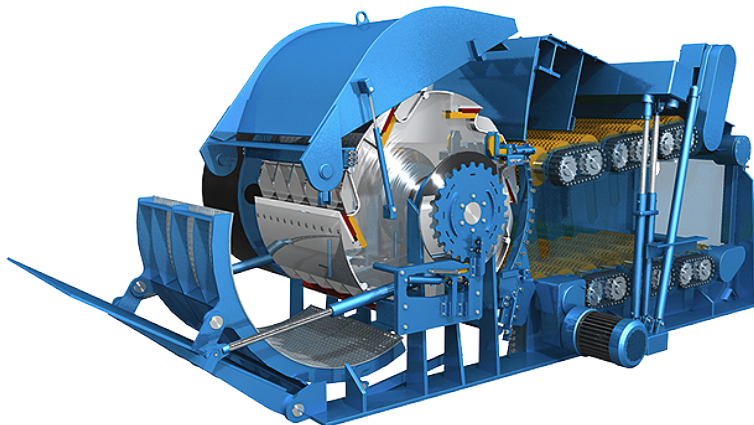


DRUM CHIPPER (HORIZONTAL)

MARKET-LEADING MACHINES THAT PROCESS ANY WASTE WOOD PRODUCT.

We manufacture complete chipping lines that meet the highest performance and reliability criteria. Our heavy-duty machinery can handle the toughest conditions and Bruks' horizontal-fed drum chipper is no exception.



Our drum chippers, with their large in-feed openings, lead the market and are capable of processing any waste wood product. Logs or bundles of wood with a diameter of over a meter can be reliably processed in Bruks' larger chippers.

With the ability to produce up to 300t/h of high-quality pulp mill chips, or smaller microchips for use in the biofuel industry, our drum chippers have flexible arrangements to produce even large chips of up to 200mm in length.

With more than 50 years of experience and over 10,000 drum chippers installed, you can depend on a well-tested product that will deliver a long, economic life with low maintenance costs.

FACTS

PRODUCT AREA:

- Chipping

SCAN THE QR-CODE:

And view the Page online, where you will have access to more information





WEAR RESISTANT, PROVEN TECHNOLOGY

Our drum chippers have heavy-duty, self-aligning bearings that are centered in steel housings and bolted to the side walls of the machine. These deliver a long and effective service life.

In addition, their feed rollers have special 'teeth' that are surface-hardened by a heat treatment process, resulting in a particularly high wear resistance. We can deliver rollers with the option to have exchangeable wear segments.

Hydraulic or pneumatic cylinders are used to regulate the pressure of the upper feed rollers and to open the upper feed rollers for maintenance and easy cleaning. Hydraulic cylinders are also used for maintenance functions and easy access for cleaning and knife change.

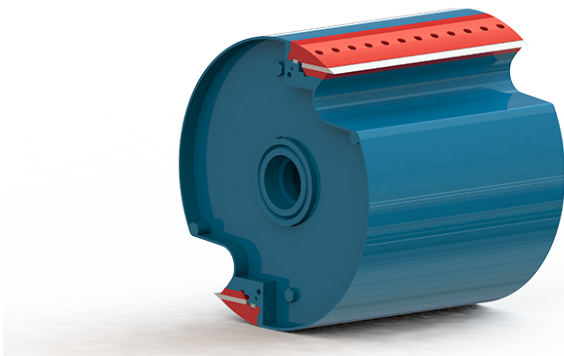


Image: For quick, easy and safe knife change, the clampingplate is secured in the rotor body

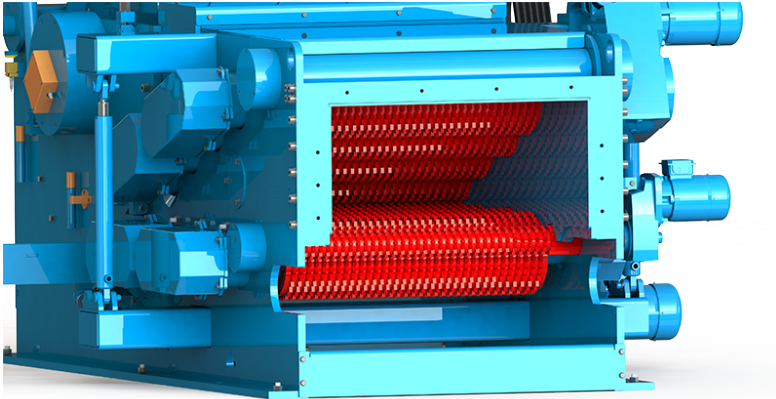


Image: To secure even and continuous feed to the cutting system, the in-feed system with lower and upper in-feed rollers are designed to allow left-lifting up to maximum in-feed height



Image: The operating unit is equipped with safety and maintenance functions

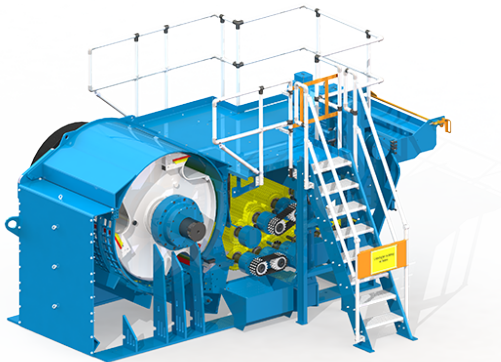


Image: The drum chipper includes a service platform, to allow for easy and safe access, and for facilitating knife change

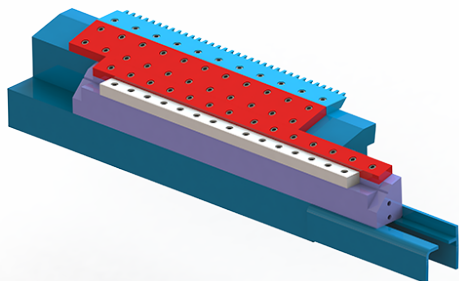


Image: The wear plates on the counter knife are bolted and replaceable, as well as partly extractable

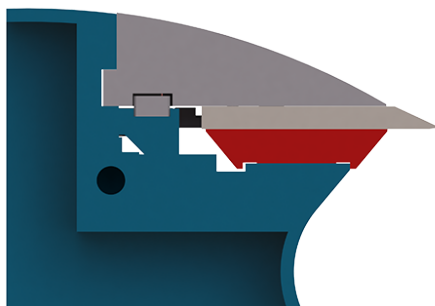


Image: The wear plates on the rotor are replaceable and able to turn, and they are placed underneath the chipping knives to reduce wear in the chip pockets.

TECHNICAL DATA

Type	Infeed width [mm]	Rotor diameter [mm]	Infeed rollers [pcs]	Motor power [kW]
DH 100	300,500	300	2	18,5-37
DH 120	400, 500, 650	450	2	22-55
DH-V 120/250	650	450	3	22-55
DH 150	400, 500, 650	500	2	30-75
DH 200	400, 500, 650	580	2	55-132
DH-V 200/300	650, 800	580	3	55-132
DH 180	540	600	2	45-75
DH 240	500, 650, 800	700	4	55-132
DH-V 240/350	650, 800	700	5	55-132
DH 365	560, 825	800	6	55-2x132
DH 300	650, 800	1000	6	110-250
DH 300(400)	800, 1000	1000	8	110-250
DH-V 300/400	800, 1000, 1200	1000	5	110-250
DH 400	650, 800, 1000, 1200	1300	8	160-500
DH 400(550)	1000, 1200	1300	10	160-500
DH 500	800, 1000, 1200	1600	11	315-630
DH 500(700)	1000, 1200	1600	12	315-630
DH 700	1000, 1200, 1450	2000	13	630-1500
DH 850	1200, 1450	2000	15	630-1500
DH 1000	1200, 1450	2000	15	630-1500
DH 1050	1450, 1850	2400	14	1250-2500
DH 1200	1450	2800	18	1250-2500

RELATED PRODUCTS WITHIN THE SAME PRODUCT AREA:

- [Disc chipper \(drop fed\)](#)
- [Disc chipper \(horizontal fed\)](#)
- [Drum chipper \(gravity\)](#)
- [Drum chipper \(horizontal\)](#)
- [Mobile chippers](#)